

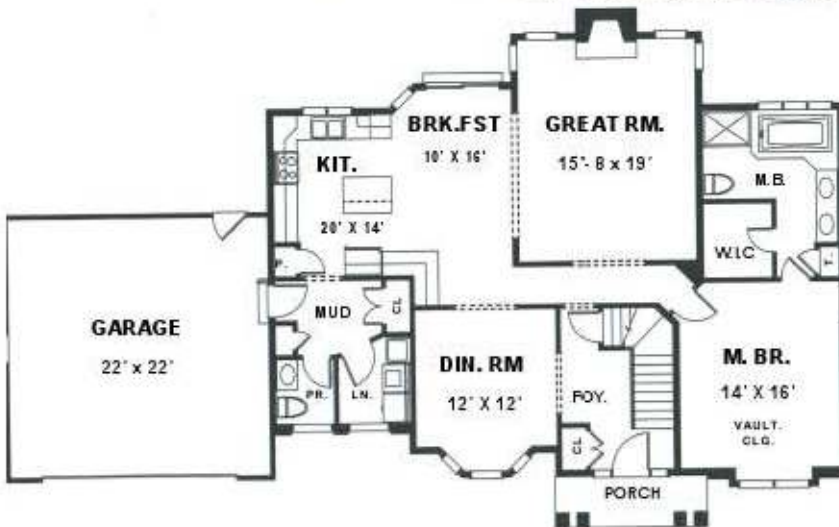
CARINI ENGINEERING DESIGNS P.C

1387 FAIRPORT ROAD, SUITE 560
FAIRPORT, N.Y 14450



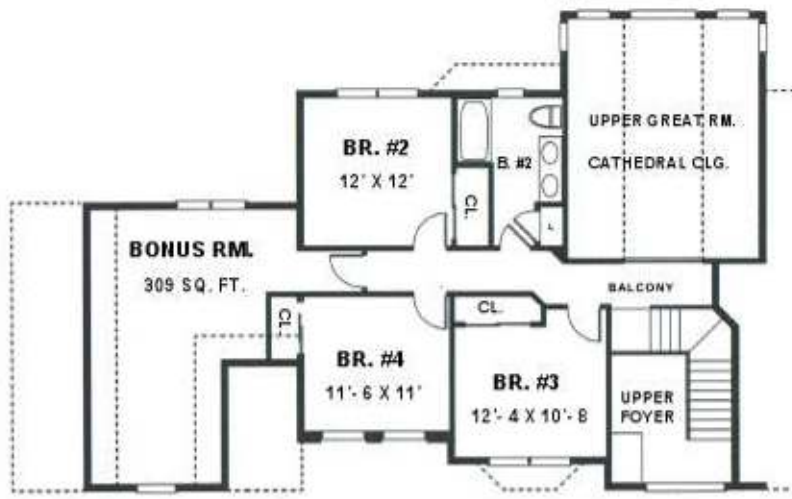
8/14/2000 1496

COPYRIGHT © 1996
CARINI ENGINEERING DESIGNS, P.C.



CARINI
ENGINEERING
DESIGNS P.C.

PLAN NO.
DS 2409



- ◆ **TOTAL AREA: 2157 SQ.FT**
- ◆ OPEN FOYER
- ◆ 2 1/2 BATHS
- ◆ 1ST. FLOOR MASTER SUITE
- ◆ LARGE GREAT RM.
- ◆ DINING RM. WITH BAY WINDOW
- ◆ KITCHEN OPEN TO BREAKFAST
- ◆ WORK ISLAND
- ◆ 3 BEDROOMS UP
- ◆ LARGE MASTER SUITE WITH CATHEDRAL CLG.
- ◆ WHIRLPOOL TUB WITH SHOWER
- ◆ WALK IN CLOSET
- ◆ DOUBLE VANITY
- ◆ BALCONY OPEN TO GREAT RM.
- ◆ 69'- 2" WIDE
- ◆ 41'- 0" DEEP
- ◆ 9' CEILING HGT.(1ST.FLR.)
- ◆ 8' CEILING HGT. (2ND.FLR.)