

CARINI ENGINEERING DESIGNS P.C

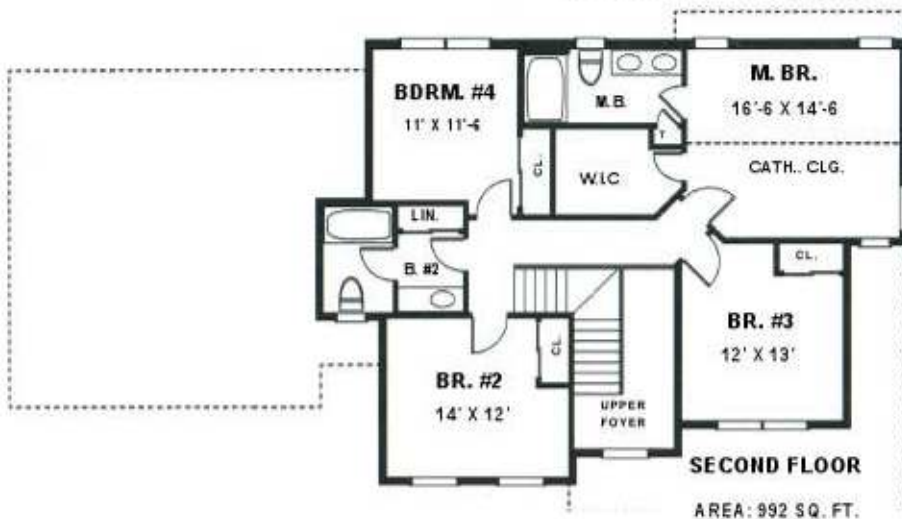
1387 FAIRPORT ROAD, SUITE 560
FAIRPORT, N.Y 14450



COPYRIGHT © 1996
CARINI ENGINEERING DESIGNS, P.C.

CARINI
ENGINEERING
DESIGNS P.C.

PLAN NO.
DS 2365



- ◆ **TOTAL AREA: 2145 SQ.FT**
- ◆ 2 STORY FOYER
- ◆ 2 1/2 BATHS
- ◆ 1ST. FLOOR LAUNDRY RM.
- ◆ LARGE FAMILY RM.
- ◆ BIG KITCHEN OPEN TO BREAKFAST
- ◆ WORK ISLAND
- ◆ WRAP AROUND PORCH
- ◆ 4 BEDROOMS UP
- ◆ CATH. CLG. IN MASTER SUITE
- ◆ WHIRLPOOL TUB AND SHOWER
- ◆ WALK IN CLOSET
- ◆ DOUBLE VANITY
- ◆ **64'- 0" WIDE**
- ◆ **35'- 6" DEEP**
- ◆ **9' CEILING HGT.(1ST.FLR.)**
- ◆ **8' CEILING HGT. (2ND.FLR.)**