

# CARINI ENGINEERING DESIGNS P.C

1387 FAIRPORT ROAD, SUITE 560  
FAIRPORT, N.Y 14450

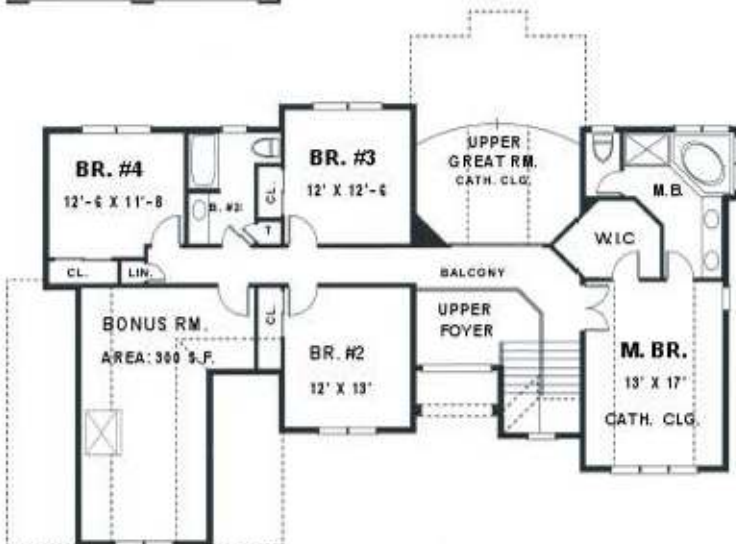


COPYRIGHT © 1994  
CARINI ENGINEERING DESIGNS, P.C.

**CARINI**  
ENGINEERING  
DESIGNS P.C.

---

PLAN NO.  
**DS 2353**



- ◆ **TOTAL AREA: 2605 SQ.FT**
- ◆ 2 STORY FOYER
- ◆ 2 1/2 BATHS
- ◆ 1ST. FLOOR LAUNDRY RM.
- ◆ CATH. CLG. IN FAMILY RM.
- ◆ BIG KITCHEN OPEN TO BREAKFAST
- ◆ DINING RM. WITH STEP CLG.
- ◆ LIVING RM. OPEN TO DEN
- ◆ DEN WITH COFFERED CLG.
- ◆ 4 BEDROOMS UP
- ◆ LARGE MASTER SUITE
- ◆ W.P TUB WITH SHOWER
- ◆ LARGE WALK IN CLOSET
- ◆ MAIN BATH
- ◆ 63'- 0" WIDE
- ◆ 45'- 0" DEEP
- ◆ 9' CEILING HGT.(1ST.FLR.)
- ◆ 8' CEILING HGT. (2ND.FLR.)